

A muscular man with a focused expression is shown in a boxing ring. He is wearing brown leather Everlast boxing gloves. The background is a blurred gym setting with a poster on the wall. The Everlast logo is in the top right corner, and the year 2023 is in the bottom left corner.

**EVERLAST**<sup>®</sup>

**FIGHT  
SPORTS  
EQUIPMENT**

**2023**



**CONTENT:**

**07 BRAND HISTORY**

**08 EVERLAST PRO TEAM**

**18 GLOSSARY**

**20 GLOVES**

**FITNESS & BOXING GLOVES**

**BOXING GLOVES**

**PRO BOXING**

**PRO BOXING FIGHT GLOVES**

**MUAY THAI GLOVES**

**MMA GLOVES**

**TRAINING GLOVES**

**HEAVY BAG GLOVES**

**KIDS GLOVES**

**54 PROTECTIVE GEAR**

**HANDWRAPS**

**MOUTHGUARDS**

**HEADGEARS**

**SPARING PROTECTOR**

**GROIN PROTECTOR**

**SHIN GUARDS**

**MITTS, SHIELDS & PADS**

**74 FOOTWEAR**

**78 TRAINING EQUIPMENT**

**106 FITNESS**

**112 COMPETITION TRUNKS**



**A CHAMPION  
IS SOMEONE  
WHO GETS UP  
EVEN WHEN HE  
CAN'T.**

**JACK DEMPSEY**  
THE FIRST EVERLAST BOXER





# BRAND HISTORY



The name Everlast is synonymous with boxing, although the company started out as a swimwear manufacturer in the Bronx in 1910.

Seventeen year-old Jacob Golomb, the son of a tailor and an avid swimmer, was dissatisfied with swimsuits of the time that barely lasted a season, and began making suits that he guaranteed would last for a full year. He gave them the name “EVERLAST” and although the swimsuits did not last throughout history, the name did.

Over the subsequent years, Golomb transformed his company into a small retail store that carried a full Line of sports equipment.

In 1917, a young fighter named Jack Dempsey introduced boxing to Golomb and Everlast. Dempsey asked Golomb to construct protective headgear that would last more than 15 rounds of intensive boxing training. Golomb special designed the training gear for Dempsey.

In 1919, Dempsey won the world’s heavyweight championship wearing boxing gloves made for him by Golomb. Everlast became the headquarters for boxing equipment throughout the world.

# **EVERLAST PRO TEAM**

**We are a carefully selected team of the most elite athletes in sport.**

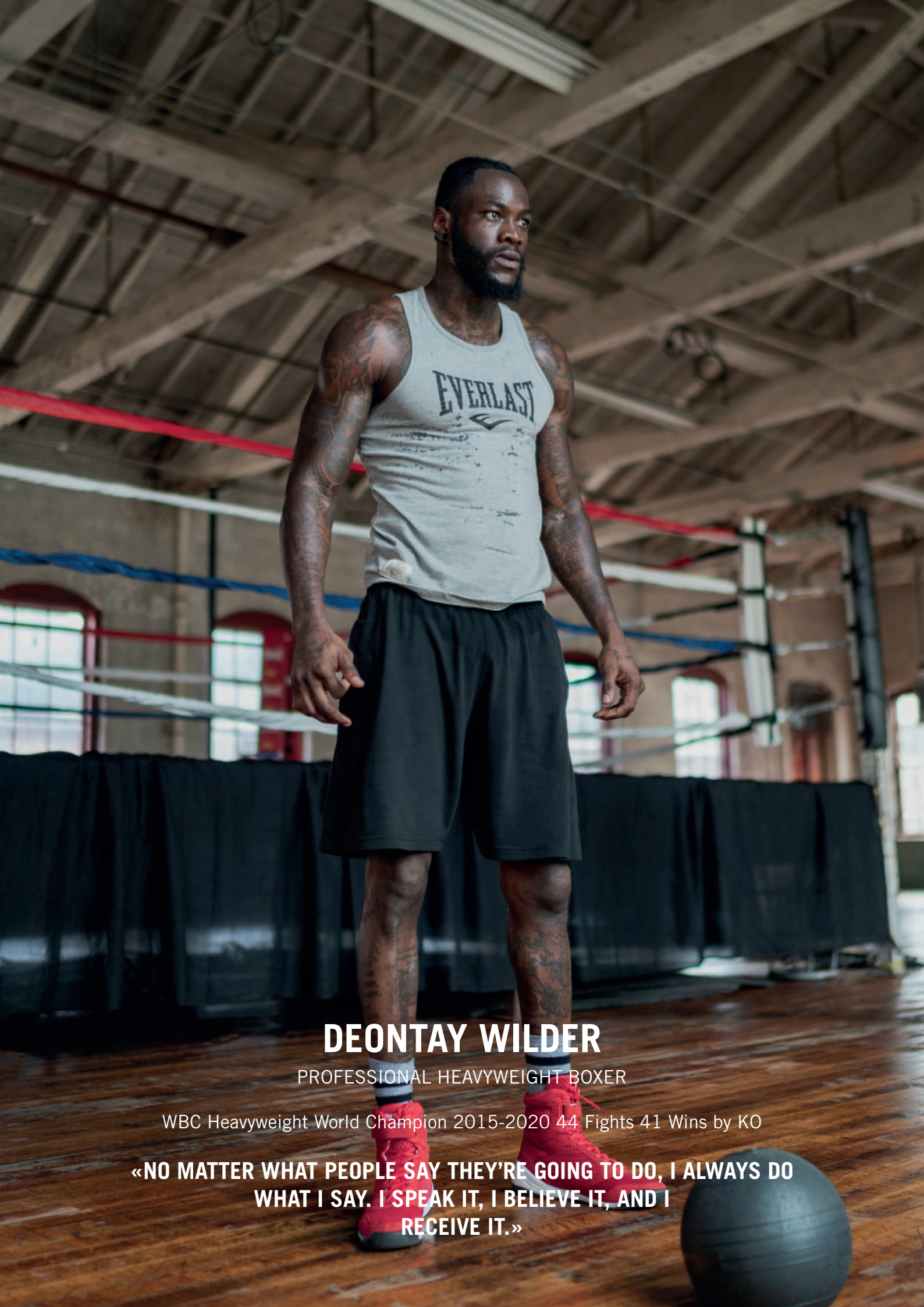
**We're first movers, trend setters, thought leaders, ground breakers.**

**We set the pace.**

**We are first.**

**We are #TeamEverlast.**



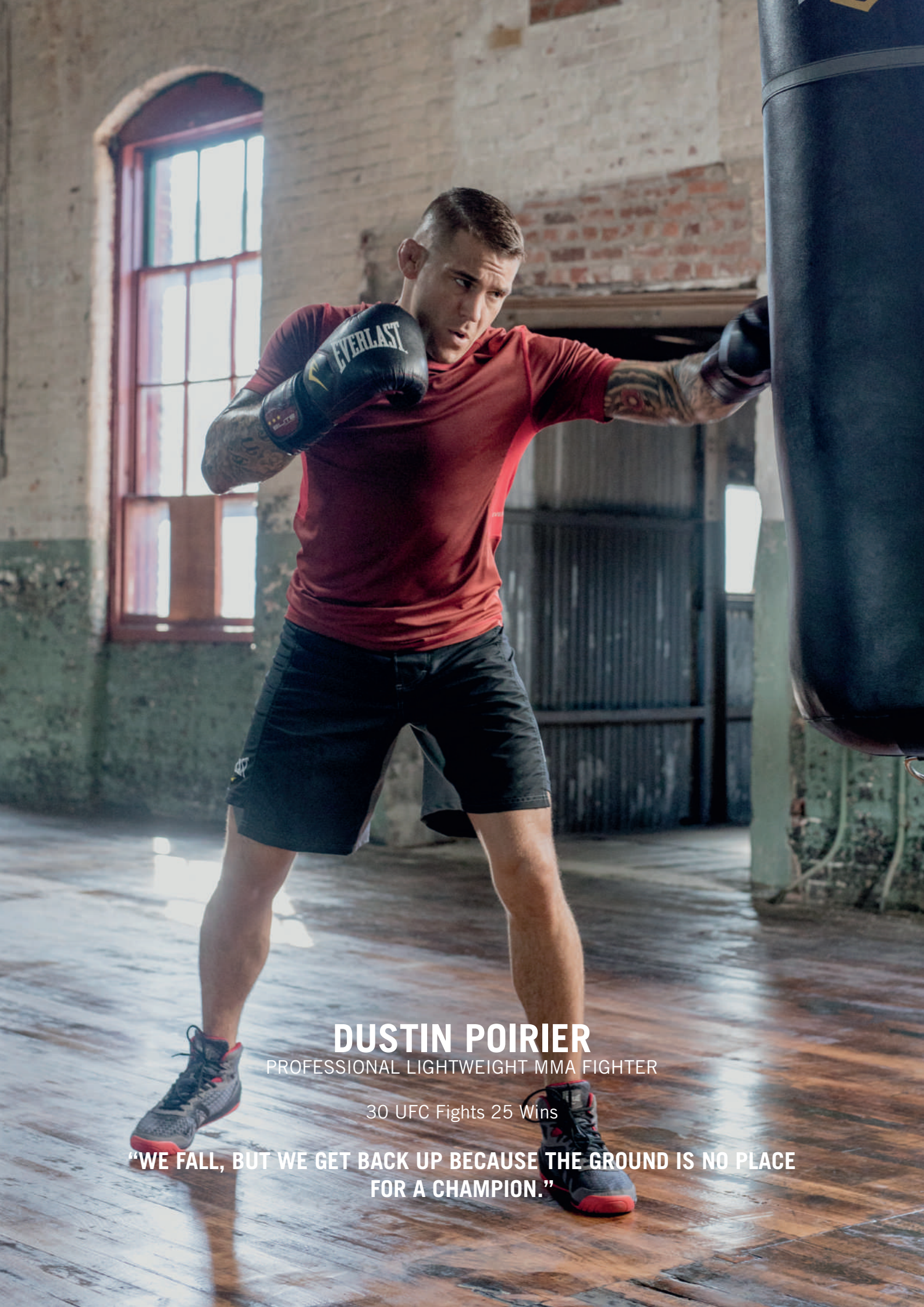


# DEONTAY WILDER

PROFESSIONAL HEAVYWEIGHT BOXER

WBC Heavyweight World Champion 2015-2020 44 Fights 41 Wins by KO

**«NO MATTER WHAT PEOPLE SAY THEY'RE GOING TO DO, I ALWAYS DO  
WHAT I SAY. I SPEAK IT, I BELIEVE IT, AND I  
RECEIVE IT.»**



# DUSTIN POIRIER

PROFESSIONAL LIGHTWEIGHT MMA FIGHTER

30 UFC Fights 25 Wins

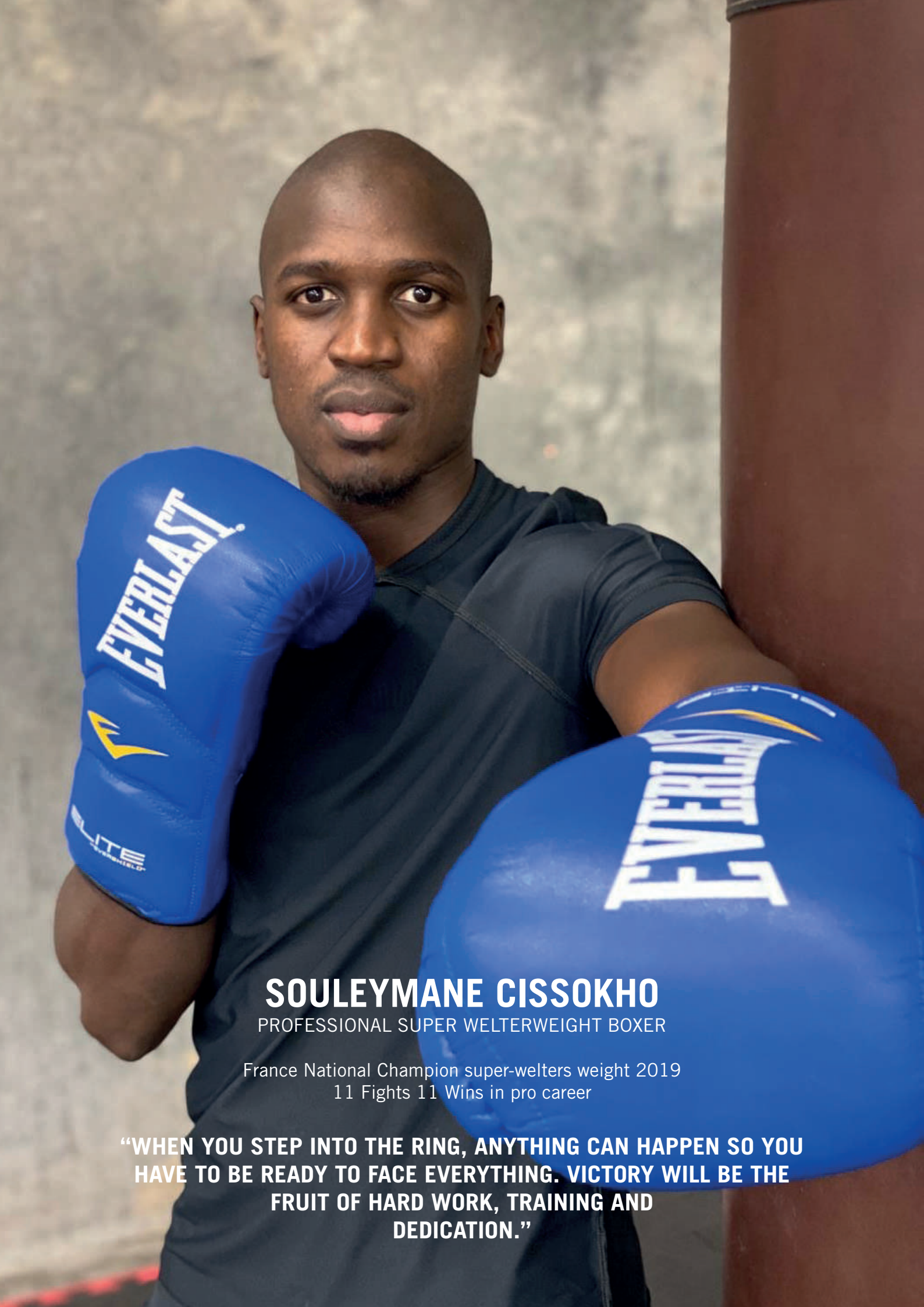
**"WE FALL, BUT WE GET BACK UP BECAUSE THE GROUND IS NO PLACE FOR A CHAMPION."**



**CYRIL BENZAQUEN**  
PROFESSIONAL KICKBOXER

5 time World Champion of KickBoxing

**«I DON'T HAVE ANY TALENT, I'M JUST A DREAMER AND HARD WORK IS AN OBSESSION»**



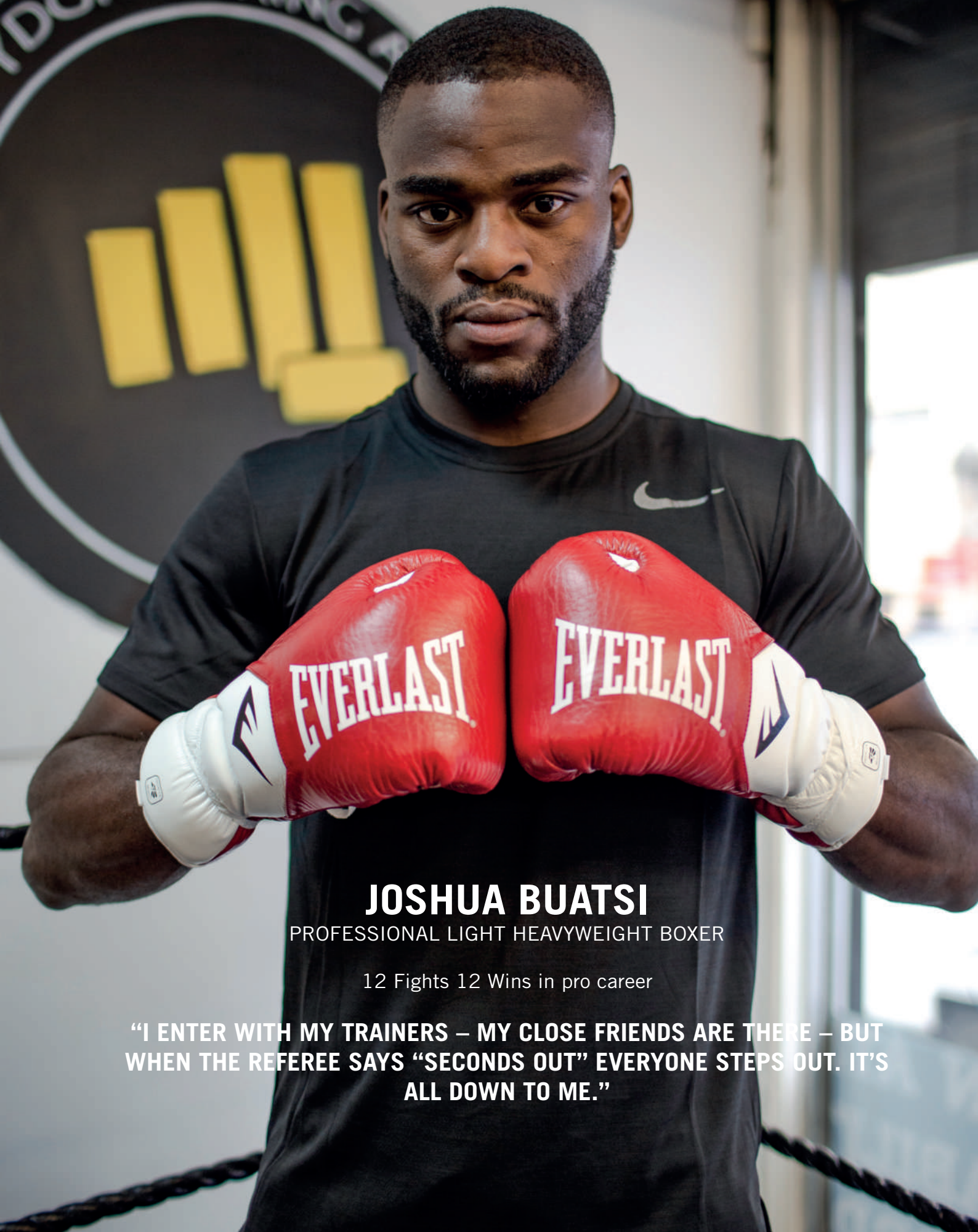
## **SOULEYMANE CISSOKHO**

PROFESSIONAL SUPER WELTERWEIGHT BOXER

France National Champion super-welters weight 2019  
11 Fights 11 Wins in pro career

**“WHEN YOU STEP INTO THE RING, ANYTHING CAN HAPPEN SO YOU  
HAVE TO BE READY TO FACE EVERYTHING. VICTORY WILL BE THE  
FRUIT OF HARD WORK, TRAINING AND  
DEDICATION.”**

EDON BOXING



## **JOSHUA BUATSI**

PROFESSIONAL LIGHT HEAVYWEIGHT BOXER

12 Fights 12 Wins in pro career

**“I ENTER WITH MY TRAINERS – MY CLOSE FRIENDS ARE THERE – BUT WHEN THE REFEREE SAYS “SECONDS OUT” EVERYONE STEPS OUT. IT’S ALL DOWN TO ME.”**



**CARL FRAMPTON**  
PROFESSIONAL FEATHERWEIGHT BOXER

WBA Featherweight World Champion 2016-2017 28 Fights 26 Wins

**“I WANT TO BE A LEGEND, HONESTLY, THAT’S WHAT I WANT TO BE, A LEGEND IN IRISH SPORT. I WANT TO KEEP BEATING BIG NAMES. I WANT TO GET BIG FIGHTS, BRING THEM BACK TO BELFAST AS MUCH AS POSSIBLE, AND KEEP WINNING.”**

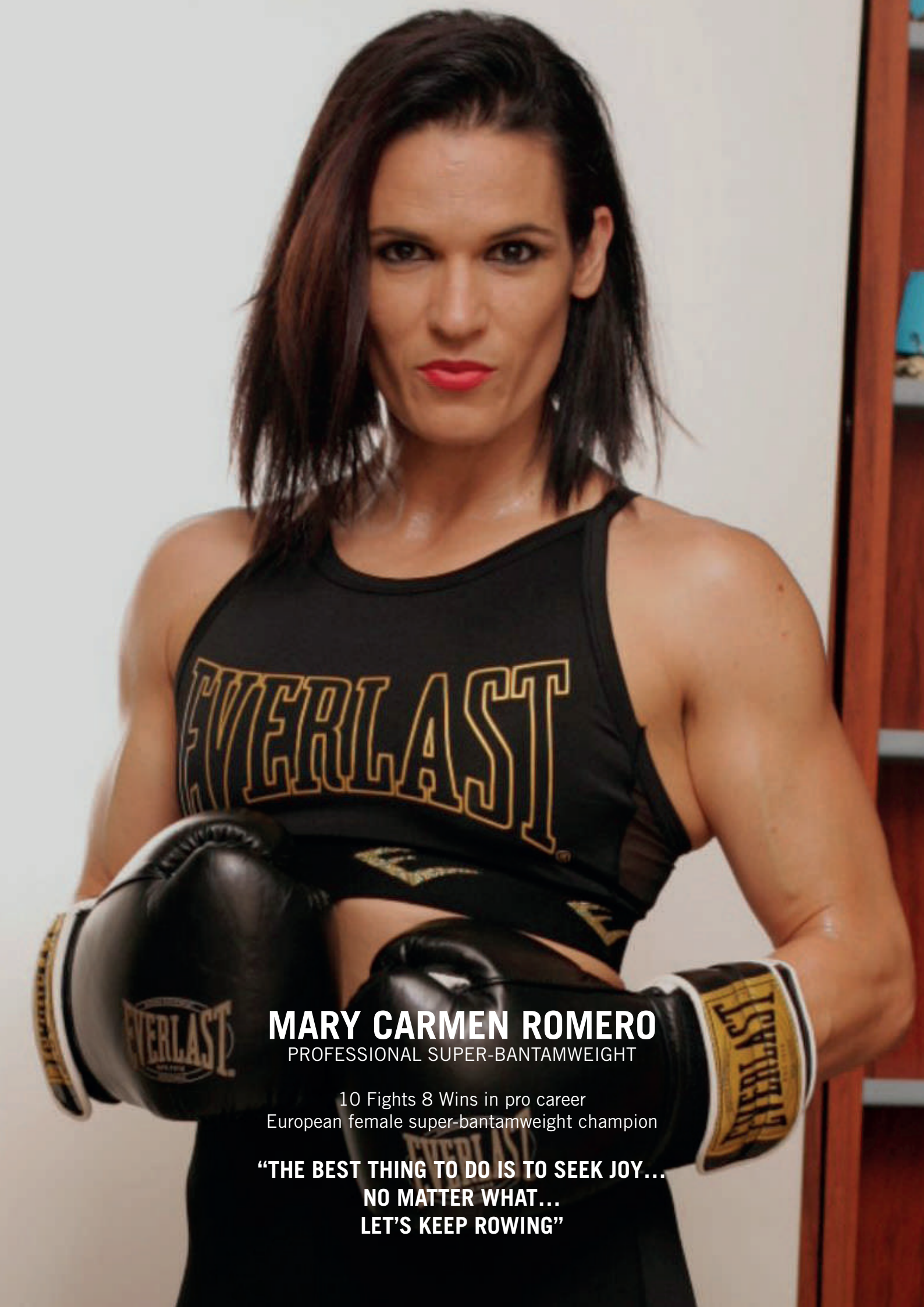


## LEAH MCCOURT

PROFESSIONAL FEATHERWEIGHT MMA FIGHTER

6 Fights 5 Wins in pro career

**“THIS IS IT - THESE ARE BIG RISKS THAT FIGHTERS TAKE, PUSHED UP TO THE MAIN CARD, PUSHED UP TO THE MAIN EVENT ON SUCH A HUGE CARD, ALL THE LIGHTS ON YOU, ALL THE EYES ON YOU.”**



**MARY CARMEN ROMERO**  
PROFESSIONAL SUPER-BANTAMWEIGHT

10 Fights 8 Wins in pro career  
European female super-bantamweight champion

**“THE BEST THING TO DO IS TO SEEK JOY...  
NO MATTER WHAT...  
LET’S KEEP ROWING”**





## **SAMIR ZIANI**

PROFESSIONAL FRENCH BOXER

45 Fights 33 Wins in pro career

**“TO INSIST IS TO EXISTE,  
I CAN’T ACCEPT DEFEAT WITHOUT FIGHTING,  
I AIM TO WIN”**

# GLOSSARY



RETAIL

Product available for mass market and sporting good retailers



GYM & SPECIALTY SHOPS

Product available for boxing gym and pro shops

**EVERSHIELD™**

Updated design for advanced protection. Secure fit maintains protection and comfort during a variety of striking angles

**EVERCOOL™**

EVERCOOL™ ventilation system and breathable fabric is the ultimate source of body temperature regulation for athletes of every level.

**EVERDRI™**

The ultimate in moisture management, EVERDRI™ wicking optimizes your comfort and endurance levels.

**EVERGEL™**

EVERGEL™ technology provides state-of-the-art cushioning and dissipates impact energy, improving protection for hands, knuckles, and wrists.

**POWERCORE™**

Centralized POWERCORE™ weight placement for maximized force dispersion.

**NEVATEAR™**

NEVATEAR™ is a layered matrix of synthetic leather and webbed vinyl engineered to outlast the heaviest hitters.

**HYPERFLEX™**

HYPERFLEX™ spring-locking technology provides 3 different and innovative ways to improve reflexes and hand-eye coordination.

**EVERSTRIKE™**

EVERSTRIKE™ technology is a woven textured matrix of lightweight synthetic material, engineered for maximum durability to withstand the most powerful kicks, punches, and knees.

**HYDROSTRIKE™**

HYDROSTRIKE™ technology absorbs strikes, providing a life-like feel and a resilient construction.

**C3 FOAM**

The contoured, closed-cell C3 FOAM™ technology is designed with increased cushioning, support, and force dispersion.







**GLOVES**



## CORE 2 BOXING GLOVES

Black S/M 870250-70-8    White S/M 870260-70-3  
Black L/XL 870251-70-8    White L/XL 870261-70-3



RETAIL



GYM & SPECIALTY SHOPS

# START YOUR BOXING JOURNEY WITH THE EVERLAST CORE BOXING GLOVES

**TARGET CUSTOMER:** The casual or home exerciser, impulse buyer. Someone not well versed in boxing where ounces sizing may become confusing and traditional clothing sizes are easily understood.

**FREQUENCY:** May have taken a boxing class or is looking to just start. Can be an at home user who occasionally hits the heavy bag as part of their fitness routine and where overall aesthetic is not main point of interest as lives in the home and not outward facing.

1. Synthetic pvc leather ensuring long-lasting durability and performance at a great price.
2. Lightweight dual layered foam provide you with the protection needed while learning the basics of boxing without weighing your hands down.
3. Ergonomic grip bar enables proper fist positioning while striking to prevent injuries.
4. Full wrist-wrap hook & loop enclosure provides a secure and customizable fit.
5. Ergonomically secured thumb helps protect and prevent injuries.
6. Polyester/nylon blend interior lining makes for easy cleaning and maintenance.





NEW



NEW



NEW



NEW

## PROSTYLE 2 BOXING GLOVE



RETAIL



GYM & SPECIALTY SHOPS

Black 10oz 925330-70-810	Red 10oz 925330-70-410	Blue 10oz 925330-70-510	Pink 8oz 925330-70-138
Black 12oz 925330-70-812	Red 12oz 925330-70-412	Blue 12oz 925330-70-512	Pink 10oz 925330-70-1310
Black 14oz 925330-70-814	Red 14oz 925330-70-414	Blue 14oz 925330-70-514	

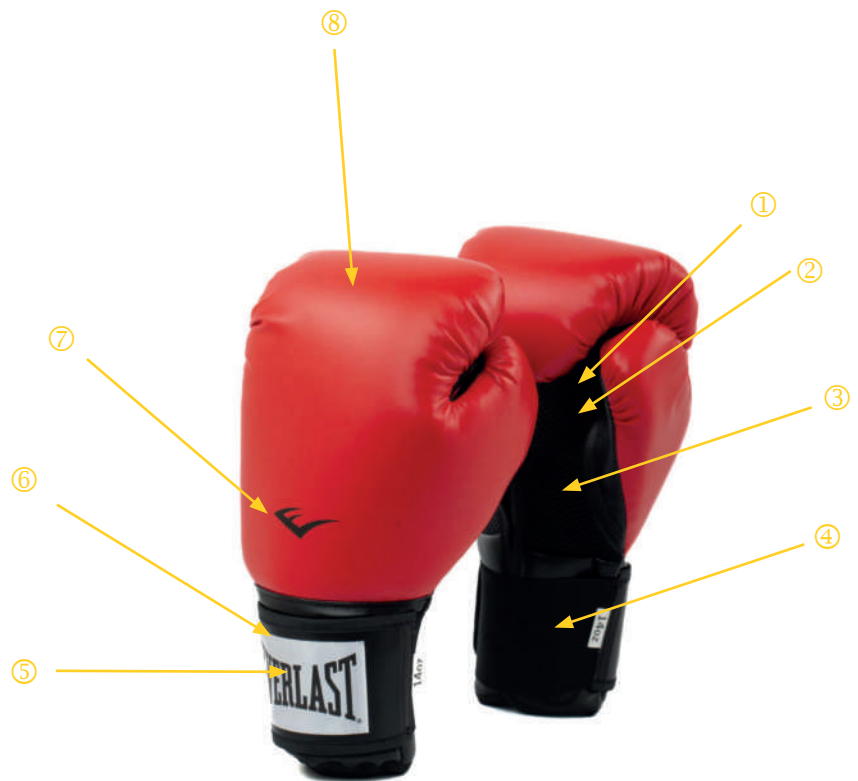


## STEP UP YOUR BOXING SKILLS WITH THE EVERLAST PROSTYLE 2 BOXING GLOVES

**TARGET CUSTOMER:** Fight sports lovers who are conscious about the features of their equipment. The Elite pad on the wrist will provide maximum comfort and optimize wrist support. The design of the gloves will also offer great outfit lifestyle with the unicolors and brand logo on top of the hand.

**FREQUENCY:** Taken a boxing class a couple of times per week

1. Attached Thumb
2. Foam Grip Bar
3. Full Mesh Palm
4. Elastic Strap
5. Satin Printed Label
6. Full Wrap Strap System
7. Printed Econ Logo
8. Improve Foam Combination





NEW



NEW



NEW

## SPARK BOXING GLOVES



RETAIL



GYM & SPECIALTY SHOPS

Black 10oz 870930-70-8  
 Black 12oz 870932-70-8  
 Black 14oz 870934-70-8  
 Black 16oz 870930-70-816

Camo 12oz 871042-70-62  
 Camo 14oz 871044-70-62  
 Grey Camo 10oz 919580-70-1210  
 Grey Camo 12oz 919580-70-1212  
 Grey Camo 14oz 919580-70-1214

Gold motivate 10oz 919580-70-8110  
 Gold motivate 12oz 919580-70-8112  
 Gold motivate 14oz 919580-70-8114  
 Pink motivate 10oz 919580-70-1310  
 Pink motivate 12oz 919580-70-1312

## STAND OUT AT YOUR NEXT BOXING CLASS WITH THE EVERLAST SPARK BOXING GLOVES

**TARGET CUSTOMER:** Social and lifestyle fitness boxer. Takes or plans on taking boxing for fitness classes. They want to look good in their cardio based boxing class and put some personality into their gloves and accessories.

**FREQUENCY:** Taken a boxing class a couple of times, up to once a week.

1. Synthetic PU leather ensuring long-lasting durability and performance.
2. Injection molded foam core provides ergonomic hand placement within the glove for optimal protection from injury.
3. Expandable polyurethane foam expands during the molding process, creating a balanced foam to air ratio for optimal impact absorption.
4. Ergonomic grip bar enables proper fist positioning while striking to prevent injuries.
5. Half mesh palm for added temperature control during intense workouts.
6. One piece hook & loop closure provides a secure and customizable fit around wrist.
7. Ergonomically secured thumb helps protect and prevent injuries.
8. Polyester/nylon blend interior lining for easy cleaning and maintenance.





## PRO STYLE ELITE BOXING GLOVE



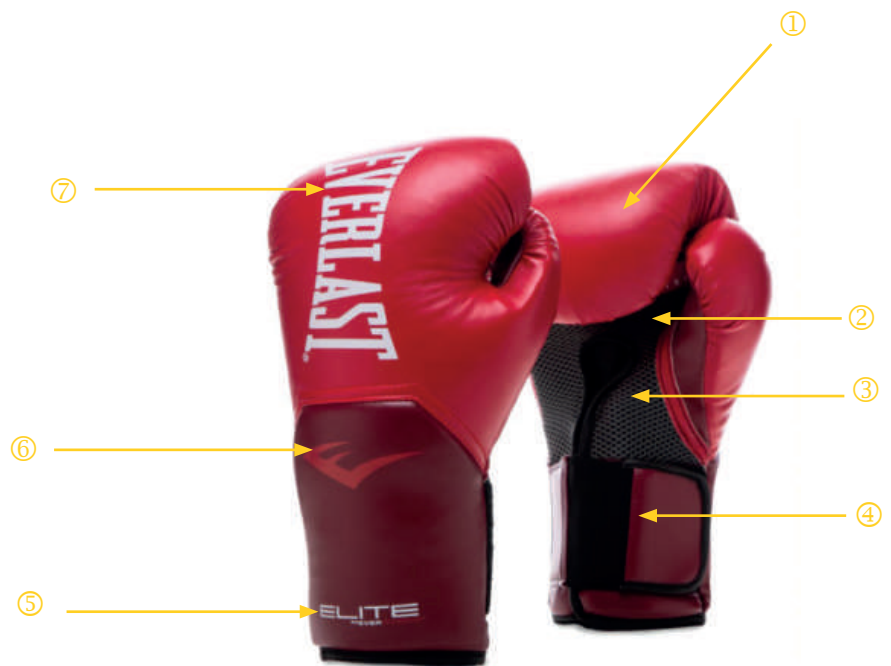
Black 8oz 870271-70-81	Gold 8oz 870290-70-1508	Red 10oz 870280-70-4	Pink/White 8oz 884960-70-13
Black 10oz 870270-70-81	Gold 10oz 870290-70-15	Red 12oz 870282-70-4	Pink/White 10oz 884961-70-13
Black 12oz 870272-70-81	Gold 12oz 870292-70-15	Red 14oz 870284-70-4	Pink/White 12oz 884962-70-13
Black 14oz 870274-70-81	Gold 14oz 870294-70-15		
Black 16oz 870270-70-816		Grey 12oz 870282-70-12	
		Grey 14oz 870284-70-12	
		Grey 16oz 870280-70-1216	

## STEP UP YOUR BOXING SKILLS WITH THE EVERLAST PROSTYLE ELITE BOXING GLOVES

**TARGET CUSTOMER:** Fight sport lovers who are conscious about the features of their equipment. The Elite pad on the wrist will provide maximum comfort and optimize wrist support. The design of the gloves will also offer great outfit lifestyle with the unicolours and brand logo on the top of the hand.

**FREQUENCY:** Taken a boxing class a couple of times per week.

1. Improve Foam Combination
2. Foam Grip Bar
3. Full Mesh Palm
4. Elastic Strap
5. Name of the range
6. Printed Econ Logo
7. Printed Everlast Logo





## POWERLOCK 2 BOXING GLOVES



RETAIL



GYM & SPECIALTY SHOPS

Black 10oz 870310-70-8	White 8oz 870311-70-3	Red 10oz 870340-70-4
Black 12oz 870312-70-8	White 10oz 870330-70-3	Red 12oz 870342-70-4
Black 14oz 870314-70-8	White 12oz 870332-70-3	Red 14oz 870344-70-4
Black 16oz 870310-70-816	White 14oz 870334-70-3	

# LOCK IN AND POWER ON WITH THE EVERLAST POWERLOCK BOXING GLOVES

**TARGET CUSTOMER:** Fit girl/guy and the fight sports connoisseur who is brand conscious and into things like crossfit, shoes, fashion and accessories. A real athlete. More than just a glove, acts as an accessory for their overall fitness fit.

**FREQUENCY:** Fitness is a heavy part of who they are and boxing typically a part of their regular workout. Typically goes to a more traditional boxing gym.

1. Synthetic PU leather ensuring long-lasting durability and performance.
2. Quad layered foam core provides mid level impact absorption.
3. Ergonomic grip bar enables proper fist positioning while striking to prevent injuries.
4. Full mesh palm for maximum temperature control during intense workouts.
5. 'Turnback' hook & loop closure provides a fully adjustable wrist strap with maximum support.
6. Ergonomically secured thumb helps protect and prevent injuries.
7. Polyester foam interior lining for an extremely comfortable fit and feel.





## 1910 CLASSIC BOXING GLOVES

Black 12oz 723621-70-8	White 12oz 723651-70-3	Brown 12oz 870404-70-9
Black 14oz 723631-70-8	White 14oz 721371-70-3	Brown 14oz 870404-70-9
Black 16oz 723641-70-8	White 16oz 721381-70-3	Brown 16oz 870400-70-916



RETAIL



GYM & SPECIALTY SHOPS

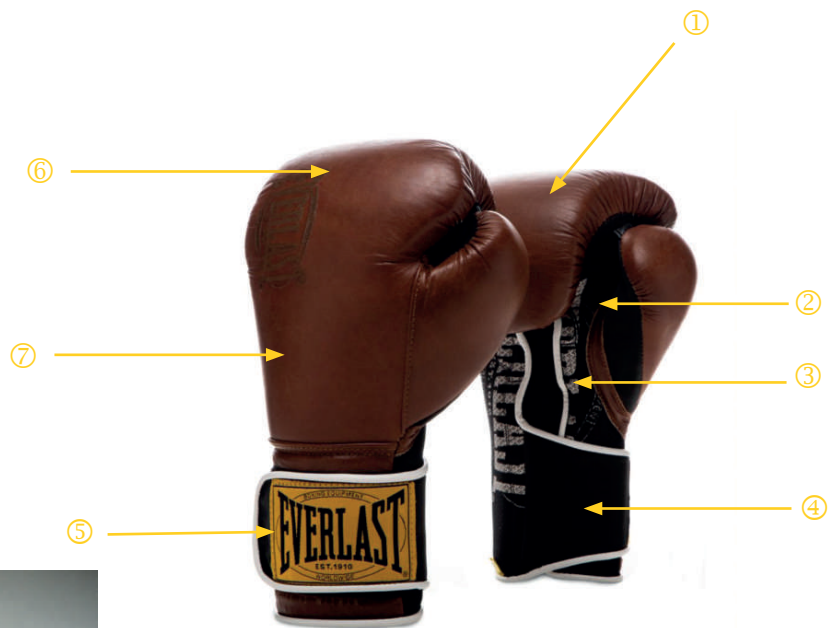


## BE PART OF EVERLAST HISTORY AND LEGACY WITH THE EVERLAST 1910 CLASSIC BOXING GLOVES

**TARGET CUSTOMER:** Fight sports connoisseur who is looking for authentic products which convey great values. The retro fashion look of the gloves combines historical logos, maximum protection and shock absorption with the genuine leather construction.

**FREQUENCY:** Taken a boxing class up to 3 times a week.

1. Improve Foam Combination
2. Foam Grip Bar
3. Full Mesh Palm
4. Elastic Strap
5. Woven label logo 1910
6. Logo 1910 tone on tone
7. Leather material





## POWERLOCK 2 BOXING GLOVES HOOK&LOOP



Black 12oz 870482-70-8      White 12oz 870482-70-3  
Black 14oz 870484-70-8      White 14oz 870484-70-3  
Black 16oz 870480-70-816      White 16oz 870480-70-316

## LOCK IN AND POWER ON WITH THE EVERLAST POWERLOCK BOXING GLOVES

**TARGET CUSTOMER:** Fit girl/guy and the fight sports connoisseur who is brand conscious and into things like crossfit, shoes, fashion and accessories. A real athlete. More than just a glove, acts as an accessory for their overall fitness fit.

**FREQUENCY:** Typically goes to a traditional boxing gym, up to 3 times a week.

1. Full grain leather provides maximum durability and performance.
2. 5 layer foam core provides high level impact absorption.
3. Ergonomic grip bar enables proper fist positioning while striking to prevent injuries.
4. Ventilated palm for maximum temperature control during use.
5. Padded wrist for protection while blocking during sparring.
6. 'Turnback' hook & loop closure provides a fully adjustable wrist strap with maximum support.
7. Padded 'turnback' loop for increased protection for you and your partner during training and sparring.
8. Ergonomically secured thumb helps protect and prevent injuries.
9. Sweat resistant polyester/nylon foam interior lining for an extremely comfortable fit and feel.





## 1910 HOOK&LOOP SPARRING GLOVES



GYM & SPECIALTY SHOPS

Brown 12oz 891260-70-9	White 12oz 898290-70-312	Black 12oz 898290-70-812
Brown 14oz 891261-70-9	White 14oz 898290-70-314	Black 14oz 898290-70-814
Brown 16oz 891260-70-916	White 16oz 898290-70-316	Black 16oz 898290-70-816

Ventilated palm improves airflow and comfort.  
Laser etched detailing.  
Genuine leather construction.  
Elevated take on a legendary glove.  
Padding and lush cushion interior.





## POWERLOCK 2 PRO LACED GLOVES



GYM & SPECIALTY SHOPS

Black 12oz 896910-70-812    White 12oz 896910-70-312  
Black 14oz 896910-70-814    White 14oz 896910-70-314  
Black 16oz 896910-70-816    White 16oz 896910-70-316

Full Grain Leather Provides Maximum durability and performance.  
5 Layer Foam Core Provides High Level impact absorption.  
Ergonomic grip bar enables proper fist position while striking to prevent injuries.  
Ventilated palm for maximum temperature control during use.  
Padded wrist for protection while blocking during sparring.  
Advanced Level Lace System provides a fully adjustable system for a highly secure fit and maximum support.  
Raised cuff lace track to prevent lace movement during workouts or sparring.  
Ergonomically secured thumb helps protect and prevent injuries.  
Sweat resistant polyester/nylon foam interior lining for easy cleaning and high level of comfort.

#00000

```

<a id="image" href="" title="Scientifically developed"><button class="button"><i class="go"></i></button></a>

<div class="fight">
<button class="engineered" id="new glove"> New Launch
</div>
</div>
</div>

```

000000 PL2\_ U910  
MODEL: PL-VOID

02

HYPER VOID  
HYPER VOID

EVERLAST

T00054210098

HYPERVOID

2



POWERLOCK  
BEYOND THE NOW



## 1910 SPARRING LACED GLOVES

Brown 12oz 870502-70-9  
Brown 14oz 870504-70-9  
Brown 16oz 870500-70-916

Ventilated palm improves airflow and comfort.  
Laser etched detailing.  
Genuine leather construction.



GYM & SPECIALTY SHOPS







## 1910 PRO FIGHT GLOVES



GYM & SPECIALTY SHOPS

White 8oz 722160-70-3   Red 8oz 891270-70-4   Blue 8oz 891270-70-5  
 White 10oz 722170-70-3   Red 10oz 891271-70-4   Blue 10oz 891271-70-5

Premium metallic leather.  
 Ventilated palms.  
 Competition lace-up boxing gloves.  
 Laser-etched authentic original Everlast logo and patch.  
 Elevated take on a legendary glove.  
 Timeless icon of boxing style.



WHILE STOCKS LAST!



## ELITE MUAY THAI GLOVES



GYM & SPECIALTY SHOPS

Black 12oz 820361-70-8  
Black 14oz 820362-70-8

Pro quality Muay Thai boxing gloves.  
Ventilated palm improves airflow and comfort.  
Laser etched detailing.  
Genuine leather construction.  
Padding and lush cushion interior.









**WHILE STOCKS LAST!**

## MMA GRAPPLING GLOVES

Black S/M 855220-70-8  
Black L/XL 855221-70-8

Premium synthetic leather provides long lasting durability and functionality.  
Full wrist-wrap strap provides superior wrist support and allows for a more customizable fit.  
New design with refined glove shape for improved finger flexibility and hand protection. Articulated finger ridges for ease of movement.  
Used for grappling and mitt work.



RETAIL



GYM & SPECIALTY SHOPS



## MMA HEAVY BAG GLOVES

Black L/XL 855160-70-8

Full wrist wrap strap provides superior wrist support and allows for a more customizable fit.  
New design with refined MMA glove shape for improved finger flexibility and hand protection.  
Used for heavy bag workouts and mitt work.



RETAIL



GYM & SPECIALTY SHOPS





## EVERSTRIKE TRAINING GLOVES



RETAIL



GYM & SPECIALTY SHOPS

Black/Grey M/L 839360-70-84    Black/Gold S/M 839310-70-33  
 Black/Grey L/XL 839360-70-84    Black/Gold M/L 839310-70-33

EVERCOOL™  
 EVERDRI™

Synthetic leather construction.  
 Cushioned foam dissipates impact of strikes.  
 Reinforced fifth metacarpal padding minimizes hand trauma.



## WRISTWRAP HEAVY BAG GLOVES

Black S/M 883340-70-8  
Black L/XL 883341-70-8

Premium synthetic leather and superior glove construction provide lasting durability and functionality.  
Full wrist wrap strap enhances wrist support and allows for a more customizable fit.  
Ideal for mitt work and heavy bag workouts.



RETAIL



GYM & SPECIALTY SHOPS



## HEAVY BAG GLOVES

Black 858910-70-8

Made from premium neoprene materials.  
Light weight slip on design.  
Machine Washable.



RETAIL



GYM & SPECIALTY SHOPS



## TITAN HYBRID GLOVE

Black S/M 925370-70-8  
 Black L/XL 925371-70-8

Thick padding over the knuckles promotes proper form & helps avoid hand injuries  
 Padded thumb provides additional protection  
 Hook & loop strap provide a quick and easy solution to achieve a secure fit



## TITAN MMA GLOVE

Black S/M 925360-70-8  
 Black L/XL 925361-70-8

Traditional MMA glove silhouette, perfect for grappling or striking  
 Layered foam padding on the knuckles provides advanced protection  
 Open palm design maintains full range of motion  
 Foam padded lining improves comfort and fit  
 Hook & Loop strap system for maximum wrist support.



MMA GLOVES



## PROSPECT 2 BOXING GLOVE

Red/Gold 6oz 925380-70-46  
Red/Gold 8oz 925380-70-48



The Everlast Prospect Training line is designed to keep your young athlete protected and performing at their best. Built for boxing, kickboxing, MMA and martial arts, the Prospect 8oz Training Gloves are built with multi-layered foam padding to ensure a safe contact point on every punch. The EverCool mesh palm keeps hands cool and the hook-and-loop wrist closure offers important wrist stability and a fast, secure fit. Gloves recommended for ages 5+.

- Professional style multi-layered foam padding
- EverCool mesh palm for breathability
- Hook and loop closure for wrist stability and secure fit

8oz gloves



## PROSPECT QUICK WRAPS

Red/Gold S/M 925400-70-4  
Red/Gold L/XL 925401-70-4



Fast and easy to fit quick wraps that provide advanced hand protection. Slip fit construction with 40" of wrap support help protect young hands. The wrapping method can be tailored to provide targeted support where needed.

- Knuckle panel provides additional impact cushioning
- Cooling is provided through a breathable mesh construction.



EVERLAST





# PROTECTIVE GEAR



## 180 HAND WRAPS

Packed into boxes of 6 units  
Each unit contains 2 pieces for each hand.



RETAIL



GYM & SPECIALTY SHOPS

Black 722301-71-8

Red 723771-71-4

Blue 723771-71-5

180" (approx. 457cm) of machine-washable polyester that provides breathability and safety while training.

High-quality material provides breathable comfort and safety while training.

Thumb strap ensures ease of use with a hook-and-loop closure for a secure fit.

Fabric: 55% Nylon/45% Polyester blend



## 120 HAND WRAPS

Packed into boxes of 6 units  
Each unit contains 2 pieces for each hand.



RETAIL



GYM & SPECIALTY SHOPS

Black 722251-71-8 Red 722281-71-4 Pink 722291-71-13

White 870860-71-115 Blue 723751-71-5

120" (approx. 304cm) of machine-washable cotton that provides breathability and safety while training.

High-quality material provides breathable comfort and safety while training.

Thumb strap ensures ease of use with a hook-and-loop closure for a secure fit.

Fabric: 65% cotton/35% Polyester blend





**SPARK PRINTED  
HAND WRAPS 120"**  
Packed into boxes of 6 units  
Each unit contains 2 pieces for each hand.



Camo 919430-71-6 Black Geo 919390-71-8 Gold motivate 919420-71-15  
Grey Camo 919380-71-12 Pink motivate 919410-71-13

120" premium perfect stretch polyester woven fabric to ensure support and protection  
Tapered thumb loop construction for a premium finish and unintrusive fit  
Features a hook and loop closure system with woven end label provides maximum adjustability and a secure closure.



**1910 HAND WRAPS**  
Each unit contains 2 pieces for each hand.



White Geo 870920-70-3 Black 870920-70-8

Cotton blend fabric provides gauze like feeling with the perfect stretch.  
Ergonomic thumb loop provides a secure starting position.  
Hook & loop adjustment system ensures maximum adjustability and customizable fit.  
Fabric: 100% cotton



## EVERGEL HAND WRAPS

Black M 722551-70-8    Black/Pink S/M 723781-70-84  
Black L 722561-70-8    Black/Pink M/L 723791-70-84  
Black XL 722571-70-8



State-of-the-art EVERGEL™ material dissipates impact energy and protects knuckles during training.  
Full wrist wrap-strap provides superior wrist support and allows for a more customizable fit.  
Improved design increases functionality and durability.  
Fabric: 75% polymerized styrene butadiene rubber/25%polyester



## EVERGEL FASTWRAPS

Black S 875840-70-8  
Black M 875841-70-8  
Black L 875842-70-8  
Black XL 875843-70-8



Breathable and sweat resistant fabric.  
Evergel cushioning on knuckles.  
100" length wrap (approx. 254cm)  
Fabric: 45% Polyester/55% Nylon



## SINGLE MOUTH GUARD

Packed into boxes of 12 units

Clear 722391-72-32

Black 722391-72-8



Boil-and-bite design allows for custom molding of mouthguard to maximize protection and comfort.  
Used for training protection.  
Includes plastic mouth guard case for clean and secure storage.



## DOUBLE MOUTH GUARD

Packed into boxes of 6 units

Clear 722411-72-32

Black 722411-72-8



Boil-and-bite design allows for custom molding of mouthguard to maximize protection and comfort.  
Center breath channel provides for unobstructed airflow.  
Used for training protection.  
Includes plastic mouth guard case for clean and secure storage.



## EVERSHIELD SINGLE MOUTH GUARD

Packed into boxes of 4 units

Grey/Black 722420-71-121

Black/Red 722420-71-84



EVERSHIELD®

Two-layer mouth guard construction includes a shock-absorbent inner layer, surrounded by a more rigid outer shield for impact protection. Boil-and-bite design provides custom molds for a tight, comfortable fit. Includes plastic mouth guard case for clean and secure storage.



## EVERSHIELD DOUBLE MOUTH GUARD

Packed into boxes of 4 units

Grey/Black 722431-71-121

Black/Red 722431-71-84



EVERSHIELD®

Double-layered frame includes a shock-absorbent inner layer surrounded by a more rigid outer shield, engineered to provide upper and lower jaw protection. Boil-and-bite design provides custom molds for a tight, comfortable fit. Center breath channel allows for unobstructed airflow. Includes plastic mouth guard case for clean and secure storage.



## EVERGEL MOUTH GUARD

Packed into boxes of 4 units

Blue/White 837560-71-53

Green/White 837560-71-63



**EVERGEL™**

Triple-layer mouth guard construction includes a soft gel inner layer and a shock-absorbent middle layer, surrounded by a more rigid outer shield for ultimate impact protection.  
Boil-and-bite design provides custom molds for a tight, comfortable fit.  
Includes plastic mouth guard case for clean and secure storage.





## HEADGEAR

Black 722181-70-8

Made of synthetic leather  
Low profile and lightweight design  
Adjustable hook-and-loop chin and rear straps  
Integrated cross ear strap  
Separate rear padded impact zone



RETAIL



GYM & SPECIALTY SHOPS



## ELITE RTL HEADGEAR

Black M/L 722191-70-8  
Black L/XL 722211-70-8

Dense layered foam construction ensures maximum protection.  
Premium synthetic leather provides durability.  
Padded, plastic crossbar protects from direct impact.

EVERSHIELD®



RETAIL



GYM & SPECIALTY SHOPS



## HEADGEAR C3 EVERCOOL PRO

Black S/M 723710-70-8  
 Black L/XL 723711-70-8



EVERDRI™  
 EVERCOOL™

Premium leather construction provides long-lasting durability and functionality. Composite of EVERCOOL™ mesh design and dense foam padding ensures breathability and maximum protection to withstand the hardest punches. EVERDRI™ wicking lining optimizes your comfort and repels excessive moisture during training. Adjustable hook-and-loop back and top closure for secure placement and comfort while training.



## 1910 HEADGEAR

Black/White M/L 870820-70-81    Brown M/L 896660-70-9  
 Black/White L/XL 870821-70-81    Brown L/XL 896661-70-9



Lightweight foam provides a perfect balance of protection & movability. Forehead/crown guard w/ lace provides maximum adjustability for all head size without jeopardizing protection. Hook & loop rear system provides a secure fit that's easy to slip on and off. Buckle chin strap provides on the fly adjustment and a secure fit. Cheek guards designed to provide the most amount of coverage protection with the widest range of visibility. Integrated ear protection secures the ear within the headgear without affecting the ability to hear.





## LIGHTWEIGHT SPARRING PROTECTOR

Black S 854950-70-8  
Black M 883320-70-8  
Black L 883321-70-8  
Black XL 883322-70-8



GYM & SPECIALTY SHOPS

Flexible design allows for increased fighter mobility during competition. Premium leather construction provides long-lasting durability and functionality. Features elastic waistband with adjustable hook-and-loop rear closure for secure placement and comfort during training.



## 1910 GROIN PROTECTOR

Black/White S 870830-70-81

kidney guards provide maximum kidney protection.  
Lightweight foam maximizes ease of movement while not sacrificing protection or performance.  
Flex channels optimizes movement and flexibility.  
Lace enclose system w/optional elastic lace ensures a secure fit and reduces slippage.  
Plastic molded cup maximizes impact protection and coverage.  
Foam lined cup offers unmatched comfort and protection.  
Elastic leg strap provides a secure fit and prevents slippage.



GYM & SPECIALTY SHOPS





**WHILE STOCKS LAST!**

## SHIN GUARD



GYM & SPECIALTY SHOPS

Black M 870881-70-8  
Black L 870880-70-8



**WHILE STOCKS LAST!**

## MMA SHIN GUARDS



RETAIL



GYM & SPECIALTY SHOPS

Grey S/M 854931-70-8  
Grey L/XL 854930-70-8

Non-slip texture on bottom of foot provides traction while training.  
Synthetic leather surrounds high density foam on both panels to  
provide shin protection.  
Full-length compression sleeve for a superior fit.  
Essential for sparring workouts.



## PUNCH MITTS

Sold in pairs

Black/Grey 722341-70-8



RETAIL



GYM & SPECIALTY SHOPS

EVERDRI™

EVERCOOL™

Premium synthetic polycanvas along with superior boxing glove construction provides long lasting durability and functionality. Improved design increases functionality by including a full boxing glove backing.



## MANTIS PUNCH MITTS

Sold in pairs

Grey/Yellow 855980-70-123



RETAIL



GYM & SPECIALTY SHOPS

EVERDRI™

EVERCOOL™

Smaller surface area develops timing and sharpened speed combinations. High-grade synthetic leather provides long-lasting durability and functionality.



## LEATHER ELITE MANTIS MITTS

Sold in pairs

Black/Yellow 722371-70-8



GYM & SPECIALTY SHOPS

EVERDRI™  
EVERSHIELD™

Anatomically contoured hand design, additional gel lining and advanced multilayered foam ensures hands, wrists, and palms are supported and protected.  
Mesh outer pocket with EVERDRI™ technology keeps the trainers hands cool during intense training.  
The striking surface includes a recessed striking target and is constructed with premium full-grain leather for long lasting durability.



## POWERLOCK FOCUS MITTS

Sold in pairs

Grey/Black 925450-70-8



GYM & SPECIALTY SHOPS

Full grain leather with curved design and raised pocket for impact control during training  
Adjustable turnback hook & loop strap system provides an adjustable secure fit  
Foam filled finger cover for maximum protection  
Perforated leather mitt section for improved temperature control and breathability.  
Ergonomic position grip ball and wrist pad for maximum comfort and performance.



## 1910 MINI PATTE D'OURS

Sold in pairs

Black/White 870800-70-81 Brown 896700-70-9

- Micro sized for advanced level target control training.
- Triple layered air pocket foam provides maximum impact absorption and control.
- Pre-curved foam offers optimal impact control.
- Mesh sectioned leather mitt ensures advanced temperature control.
- Finger foam guard provides maximum protection.
- Padded wrist gives a secure fit with added impact protection



GYM & SPECIALTY SHOPS



EVERLAST  
EST. 1910  
WORLDWIDE

R

BOXING EQUIPMENT  
EVERLAST  
EST. 1910  
WORLDWIDE



## COACH VEST LTHR

Black 855360-70-8



RETAIL



GYM & SPECIALTY SHOPS

### C3 FOAM

Premium leather construction for ultimate durability.  
Contoured, closed-cell C3 FOAM™ technology with increased cushioning, support, and ultimate force dispersion to protect the torso and abdomen from powerful punches and lower body combinations. EVERDRI™ lining optimizes comfort and repels excessive moisture during training. Includes adjustable padded shoulder straps for secure placement and comfort.



## LEATHER PUNCH PADDLES

Sold individually

Black 839420-70-8



GYM & SPECIALTY SHOPS

### C3 FOAM

Multi-layered, C3 FOAM™ padding absorbs strikes during training. Unique grip allows a trainer to feel less impact on the hand and wrist. Ideal for practicing various strikes and punches. Premium leather construction. Sold in pairs.



## PUNCH SHIELD LTR

Black 831880-70-8

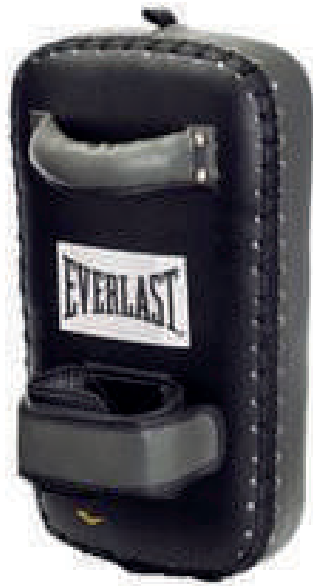


GYM & SPECIALTY SHOPS

### C3 FOAM

Premium leather construction for ultimate durability. High-density C3 FOAM™ padding absorbs the heaviest kicks, knees, and strikes. Designed for heavy-duty professional use. Reinforced rivets and padded handles withstand impact and sustain a secure grip. Dimensions: 28" x 29" x 3" (approx. 71x73x7 cm).





## MUAY THAI PADS

Black 856580-70-8

Premium synthetic leather along with superior construction increases durability and functionality. Authentic Thai design features dense foam padding for safety while blocking kicks, punches, elbows, and knees. Sold individually.



## MMA STRIKE SHIELD

Black 857740-70-8

Premium synthetic leather along with superior construction increases durability and functionality. Multiple straps increase shield functionality. High density foam for impact protection.



# FOOTWEAR MEN





## RING BLING PACK

Packed into boxes of 8 units

### PACK 8

Size	41	42	43	44	45
Qty.	1	2	2	2	1

BLACK/ WHITE 852660-64-81

RED/WHITE 852660-64-43

BLACK/GOLD 852661-61-84

High top boxing shoe with an elastic and velcro strap on the top for a better fit and support.

Back heel with contrasting heel counter for safety and sensory feel.

Upper with open windows on the sides and vamp for ventilation and articulation.

Smooth rubber outsole for flexibility and quality (abrasion).

Strobel and double durability also for flexibility, comfort and rebound.



## EVL PUNCH PACK

Packed into boxes of 8 units

### PACK 8

Size	41	42	43	44	45
Qty.	1	2	2	2	1

WHITE/BLACK 926990-61-34

BLACK/WHITE 926990-61-81

Classic 70's boxing boot with eva midsole and bottom rubber.  
 Double lasting strobel construction for better flexibility.  
 Thin sole, close to the ground for a better grip and feel.  
 uppers inspired by Everlast's 70's and 80's boxing codes.  
 open mesh and closed mesh for comfort and breathability while being sturdy on the lower parts of the upper.  
 Very high collar also from the codes of boxing.



## EVL SIDE PACK

Packed into boxes of 16 units

### PACK 16

Size	40	41	42	43	44	45
Qty.	2	2	4	4	2	2

BLACK	872740-62-8
WHITE	872740-62-3
BLACK/WHITE	872740-62-84
BLACK/GREY	872741-61-81
KAKI	872741-61-20
GREY	872741-61-12

Simple, streamlined sandal. Comfortable to wear before and after training.

A black leather Everlast punching bag hangs from a chain in a gym. The bag is cylindrical with a horizontal seam near the top. The Everlast logo, consisting of the word "EVERLAST" in white block letters and a yellow stylized "E" below it, is printed on the upper section. Two leather straps with metal buckles are attached to the top of the bag. The background is a dark, textured wall, possibly made of concrete or brick, with a metal truss structure visible at the top.

EVERLAST®



# **TRAINING EQUIPMENT**

40 Lb

80 Lb



## NEVATEAR HEAVY BAG UNFILLED

Black/White 40Lb 871749-70-8  
 Black/White 80Lb 871759-71-8  
 Black/Red 70Lb 833059-70-84



Packed into boxes of 5 units

Black/White 40Lb 871749-71-8  
 Black/White 80Lb 871759-71-8  
 Black/Red 70Lb 833059-71-84

## NEVATEAR HEAVY BAG FILLED

Black/White 40 Lb 871741-70-8  
 Black/White 80 Lb 871751-70-8  
 Black/Red 70 Lb 833051-70-84

NEVATEAR™

Heavy-duty nylon straps provide security and safety, while the double-end loop provides increased heavy bag functionality.

Specially blended filler mix of sanitized synthetic and natural fibers provides resilient shock absorbency.

Premium synthetic leather with reinforced webbing provides long lasting durability and functionality.

Not recommended for outside use.

Dimensions 40 Lb (approx. 18kg): approx. 71cm Height, 30cm diameter.

Dimensions 80 Lb (approx. 36kg): approx. 101cm Height, 33cm diameter.

Chains included: 16,5cm Length in both filled and unfilled versions.



70 Lb



## EVERSTRIKE HEAVY BAG UNFILLED

Packed into boxes of 5 units

Black/White 70 Lb 833039-71-63



RETAIL



GYM & SPECIALTY SHOPS

## EVERSTRIKE HEAVY BAG FILLED

Black/White 70 Lb 833031-70-63

NEVATEAR™  
EVERSTRIKE™

Specially blended filler mix of sanitized synthetic and natural fibers provides resilient shock absorbency.

Premium synthetic leather with reinforced webbing along with enhanced construction increases durability and functionality.

Heavy-duty straps provide security and safety; double-end loop provides increased functionality.

70 Lb (approx. 31kg): bag is approximately 101 cm in height with a 33 cm diameter.

Chains included: 16,5cm Length in both filled and unfilled versions

Not recommended for outside use.

100 Lb



## HYDROSTRIKE HEAVY BAG WHITOUT CHAIN

Black/White 100 Lb 925640-70-8



GYM & SPECIALTY SHOPS

New shape provides more versatile training options.  
Water filled technology absorbs strikes and provides a life-like feeling on impact.  
Light and portable design allows for easy pick up and shipping  
Weight is 100lb when filled.



## HEAVY BAG PHONE HOLDER

Black 925590-70-8



RETAIL



GYM & SPECIALTY SHOPS

The pocket design with clear window ensures that your phone is secure and safe, also should fit the majority of smart phones.  
Pocket has access point for charging or headphones  
The adjustable elastic strap accommodates for all sizes of heavy bags.

100Lb



## MUAY THAI HEAVY BAG FILLED

Black 100Lb filled 833121-70-8



Extra thick, durable synthetic leather for peak impact absorption.  
Specially blended filler provides resilient shock absorbency.  
6' length offers a perfect target for both upper and lower body strikes.  
Hidden seams create a smooth, even striking surface.  
100lbs (approx.45kg), approximately 116cm in height with a 33cm diameter.  
No chain included in both filled and unfilled versions  
Not recommended for outside use.

100Lb



## LEATHER HEAVY BAG FILLED



GYM & SPECIALTY SHOPS

Black/White 100Lb 833081-70-8

High-grade leather shell with specially blended filler provides resilient shock absorbency.

Includes triple-reinforced ring tabs to ensure maximum toughness and durability at the top of the bag.

Dimensions: 116cm Height, 33cm Diameter.

Includes heavy-duty chain and swivel: 28cm Length in filled version.

100Lb

120Lb

150Lb



## SUPER LEATHER HEAVY BAG FILLED



GYM & SPECIALTY SHOPS

Black/White 100Lb 833091-70-8

Black/White 120Lb 897821-70-8

Black/White 150Lb 897831-70-8

High-grade leather provides long-lasting durability and functionality.

Specially blended filler offers resilient shock absorbency.

The inner bag is lined with a 2 inch (approx. 5cm) layer of polyester foam to provide extra protection and a soft feel for strikes.

Includes triple-reinforced ring tabs to ensure maximum toughness and durability at the top of the bag.

Dimensions 100Lb (approx. 45kg): 106cm Height, 40cm Diameter

Dimensions 120Lb (approx. 54kg): 106cm Height, 45cm Diameter

Dimensions 150Lb (approx. 68kg): 121cm Height, 45cm Diameter

Includes heavy-duty chain, swivel, and spring: 28cm Length in filled version

150 Lb



## SUPER LEATHER THAI HEAVY BAG FILLED +CHAIN

Black/White 150 Lb 833141-70-8



GYM & SPECIALTY SHOPS

Premium leather shell with specially blended filler offers resilient shock absorbency.

The length provides a perfect target for both upper and lower body strikes.

100 Lb (approx. 45kg), approximately 162cm in height with a 33cm diameter.

Not recommended for outside use.

No chain included in both filled and unfilled versions.

150Lb



## SUPER LEATHER THAI BAG FILLED



GYM & SPECIALTY SHOPS

Black 150Lb filled 833141-70-8

Made with high-grade leather to ensure lasting durability and functionality.  
Specially blended filler provides resilient shock absorbency.  
Comes complete with triple-reinforced ring tabs to ensure maximum toughness at the top of the bag.  
Features heavy-duty chain and swivel in filled version  
Ideal for developing leg kicks and knee strikes.  
Weighs 150lbs (approx. 68kg): approx. 182cm in height with a 45cm diameter

100 Lb



## 1910 HEAVY BAG FILLED



Black/White 100 Lb 871830-70-8  
Brown 100 Lb 897780-70-9

Strap balancing system balances the bag quicker during impact.  
Full grain leather ensures maximum durability.  
Metal d-ring for easy mounting.  
Spring loaded chain system adds optimal impact control during use.  
Bottom mounted d-ring secures bag and reduce movement.  
Zipper closure system allows for easy replacement of interior stuffing.  
Dimensions 100 Lb (approx. 45kg): 111cm Height, 35cm Diameter.  
Chains included: 28cm Length.





## 1910 BODY SHOT BAG



Black/White 70 Lb filled 871800-70-8

Full grain leather.  
Available in three different shapes. Designed for different type of training.  
Reinforced straps and d-ring mounts.  
Dimensions 70 Lb (approx. 31kg): 73cm Height, 40cm Diameter.



## 1910 TORPEDO BAG

Black/White 70 Lb filled 871810-70-8

Full grain leather.  
Available in three different shapes. Designed for different type of training.  
Reinforced straps and d-ring mounts.  
Dimensions 70 Lb (approx. 31kg): 73cm Length, 30cm Diameter.



GYM & SPECIALTY SHOPS



## 1910 HEADHUNTER BAG

Black/white 11 Lb filled 871820-70-8

Full grain leather.  
Available in three different shapes. Designed for different type of training.  
Reinforced straps and d-ring mounts.  
Dimensions 11 Lb (approx. 5kg): 25cm Diameter.



GYM & SPECIALTY SHOPS



## POWERCORE FREE STANDING HEAVY BAG

Black/White 833270-70-8

POWERCORE™

Air-foam chamber provides realistic feel.  
Rounded design allows for easy movement around target increasing cardio,  
leg conditioning and hand-eye coordination.  
POWERCORE™ power transfer ring absorbs impact and reduces base movement and sliding.  
High-density base can easily be filled with water or sand (approximately  
250 Lb with water, 370 Lb with sand).  
Solid base provides easy-to-hit target, maximizing your workout.  
Height is adjustable from 54" to 65".  
Not recommended for outside use.



RETAIL



GYM & SPECIALTY SHOPS



## CARDIO FITNESS TRAINING BAG



RETAIL



GYM & SPECIALTY SHOPS

Black 833240-70-8

**HYPERFLEX™**

Solid foam bag with new and improved durable construction for strikes.  
Heavy duty spring neck for quick and responsive rebound.  
Base approximately 32 Lb (approx. 14kg) when filled with water.  
Bag height: 5'4 inch (approx. 152cm)  
Easy assembly, Comes in full side lithobox with carrying handle.  
Not recommended for outside use.



## HYPERFLEX STRIKE BAG

Black 833260-70-12



RETAIL



GYM & SPECIALTY SHOPS

**HYPERFLEX™**

Design allows for easy movement around target, increasing cardio, leg conditioning, and hand-eye coordination.

Dual HYPERFLEX™ individual locking springs provides three workout settings for comprehensive punching, reflex, and cardio workouts.

HYPERFLEX™(Unlock Base, Unlock Neck) setting is ideal for ultimate accuracy, speed, and agility training, and simulates sparring sessions for striking and defense. High density plastic base.

Approximately 70 Lb (approx. 31kg) when filled with water; 63' (approx. 160cm) in height at highest setting.



## REFLEX BAG

Black 833250-70-8

HYPERFLEX™

Solid foam bag with new and improved durable construction for strikes.  
Heavy duty spring neck for quick and responsive rebound.  
Base approximately 32 Lb (approx. 14kg). when filled with water.  
Bag height: 5'4 inch (approx. 152cm)  
Easy assembly; Comes in full side lithobox with carrying handle.  
Not recommended for outside use.



RETAIL



GYM & SPECIALTY SHOPS



## DOUBLE-END BAG BLADDER

**WHILE STOCKS LAST!**

Orange 833320-70-17

Latex bladder

Inflatable for all EVERLAST double-end bag sizes and select speed bags.

Used for: 6" x 4", 8" x 5", 9" x 6" bags.



GYM & SPECIALTY SHOPS



## SPEED BAG BLADDER

**WHILE STOCKS LAST!**

Orange 833310-70-17

Latex bladder.

Inflatable for all EVERLAST speed bags.

Used for: 10" x 7", 11" x 8", and 13" x 8" bags.



GYM & SPECIALTY SHOPS



## EVERHIDE SPEED BAG

Grey/Black 9"x 6" 856700-70-12

Features reinforced seams for long lasting durability.  
Balanced for accurate rebounds while training.  
Ideal for any speed bag workout.



RETAIL



GYM & SPECIALTY SHOPS



## LEATHER SPEED BAG

Black 9"x 6" 833150-70-8

Premium grade leather for extreme durability and improved functionality.  
Features reinforced seams for added strength.  
Balanced for accurate rebounds while training.  
Medium speed bag is 9" x 6" (approx. 22x15cm)



RETAIL



GYM & SPECIALTY SHOPS



## KANGAROO SPEED BAG

Black 8"x5" 821590-70-8 Black 9"x6" 821591-70-8

Ultra-premium Kangaroo leather allows this to be the lightest and most durable speedbag on the market.  
Balanced for accurate rebounds while training.



GYM & SPECIALTY SHOPS





## 1910 SPEED BAG

Black/White 870740-70-81

Brown 897790-70-9



GYM & SPECIALTY SHOPS

Full grain leather provides maximum durability and performance  
reinforced hanging loop ensures durability and ease of movement  
latex air bladder allows for effective performance and rebound rates  
reinforced rope closure  
bottom mounted air valve allows for easy inflation



## 1910 DOUBLE-END BAG

Black/White S 870751-70-8

Black/White L 870752-70-8



GYM & SPECIALTY SHOPS

Full grain leather ensures long lasting durability  
available in two sizes, smaller size for advance training  
ball shape for maximum target control and performance  
reinforced strap and d-ring mounts  
handmade provides high level of craftsmanship  
latex air bladder for effective performance and rebound rates



## POWERLOCK DOUBLE END REFLEX BALL



GYM & SPECIALTY SHOPS

Black/Red 925660-70-4

Medium size pu foam ball is the best balance for beginner and experienced training

Ball position can be adjusted along rope depending on users height

Rope length can also be adjusted depending on space and also desired rebound rate.

Includes suction cup mounts to mount to flat floor and ceiling surface. includes single carabiner as secondary solution.



## UNIVERSAL HEAVY BAG HANGER

Packed into boxes of 6 units

Grey/Yellow 833340-71-8

Rubberized interior surface prevents sleeve rotation.  
Embedded steel supports increase stability and heavy bag strength.  
Heavy-duty nylon straps provide security and safety.



RETAIL



GYM & SPECIALTY SHOPS



## DOUBLE-END ANCHOR

Grey/Yellow 857420-70-12

Stabilize your heavy bag with 45 lbs. of water.  
Bungee cord included.  
Premium synthetic leather with reinforced webbing provides long lasting durability and functionality.  
Also can be used for double-end striking bags.



RETAIL



GYM & SPECIALTY SHOPS



## COTTER PIN SWIVEL

Packed into boxes of 6 units

833350-71-16

Smooth ball bearing swivel design increases bag speed and accuracy when training.  
Machine crafted stainless steel ensures product longevity and durability  
Used for speed bags.



RETAIL



GYM & SPECIALTY SHOPS



## WOOD BEAM HEAVY BAG HANGE

Packed into boxes of 6 units

833330-71-8

Solid steel material and heavy-duty construction ensure safety and stability when hanging up a heavy bag.



RETAIL



GYM & SPECIALTY SHOPS



## HEAVYWEIGHT CHAIN

833360-70-16

Adjustable "S" hooks for customised height.  
For use with all Everlast Heavy Bags.



GYM & SPECIALTY SHOPS



## SPEED BAG KIT

833380-70-8



24" smoothly finished wooden platform comes with a speed bag swivel and vinyl speed bag for maximum at-home benefits. Kit includes wood platform, speed bag (11" x 8") and swivel, jump rope, hand wraps, and bag gloves. Complete and ready for assembly. Compatible with double-end bags and double-end anchor (sold separately). Platform is not recommended for outside use.



## ADJUSTABLE SPEED BAG PLATFORM

837590-70-8



Easily adjust speed bag-platform to ideal height for any athlete. Platform includes swivel, two brace boards, assembly hardware, and full rubber edge binding for safety. Compatible with double-end bags and double-end anchor. Adjustable speed bag boxing platform for speed bag workouts. 8" adjustable in 1" increments. 24" diameter x 1" pressboard.



## HEAVY BAG / SPEED BAG STAND

833420-70-8



RETAIL



GYM & SPECIALTY SHOPS

Heavy duty powder-coated steel tubing combined with 3 weight plate pegs allows for maximum strength and durability. Easy to assemble and will accommodate any heavy bag up to 100 Lb. Platform height is adjustable to accommodate any speed bag size. Footprint: 66.5" L x 47.6" W x 86.2" H. Not recommended for outside use.



## WATER BOTTLE

Clear 831980-70-32



GYM & SPECIALTY SHOPS

Durable, BPA-free plastic bottle holds 28 oz (approx. 82 Cl) Easy-grip design with ounce and milliliter markings. Secure screw-on lid features a flip top and large spout. Includes a removable filter. Not for use with hot or warm liquids. No electricity or batteries required.



## Powerlock Training Sticks

Red/Black 925530-70-4

Lightweight foam-covered pvc insert  
Hook & loop turning back hand strap  
Elastic wrist strap  
Rubber coated grip  
590mm length  
Sold in pairs



## Powerlock Reflex Ball

Red/Black 925540-70-4

Medium size pu foam ball is the best balance for beginner and experienced training  
Ball position can be adjusted along rope depending on users height  
Rope length can also be adjusted depending on space and also desired rebound rate  
Includes suction cup mounts to mount to flat floor and ceiling surface.  
Includes single carabiner as secondary solution



## Reaction Ball

Red/Black 925550-70-4

6 directional section for advanced rebound and hand eye coordination drills  
Silicone material for extreme durability







## TECHNI BACKPACK

Black 880760-70-8

Backpack 50L. Side pockets to put boxing gloves. Middle front mesh pocket. Top front little pocket for small things. Inside padded pocket for a laptop. Back reinforced with mesh 3D. Logo tone/tone on one side pocket. Fabric: 100% Nylon



RETAIL



GYM & SPECIALTY SHOPS



## HOLDBALL BAG

Black 880770-70-8

Big bag 70L. Side pockets with mesh for ventilation. Little pocket on the front for small things. Logo tone/tone on one side. Fabric 100% Nylon



RETAIL



GYM & SPECIALTY SHOPS



## 1910 LEATHER GYM BAG

Brown 925580-70-9

Perfect size gym full grain leather bag provides the ability to fit all your workout needs. Features an end zipper pocket with full ventilation for shoes or gloves. Outside side pocket for small accessory items. Includes hook & loop handle connection and adjustable shoulder strap with shoulder pad.



GYM & SPECIALTY SHOPS





# FITNESS



## SPEED ROPE

Black 9" 833610-70-8  
 Black 11" 833611-70-8

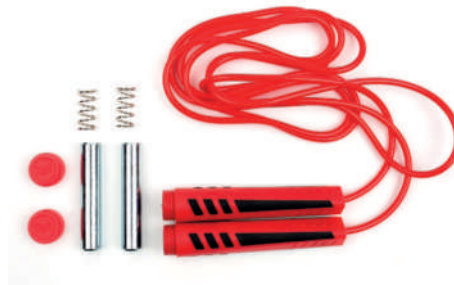


RETAIL



GYM & SPECIALTY SHOPS

Adjustable and durable cable rope featuring easy grip handles with smooth, consistent rotation.  
 Ideal for toning muscles and burning calories.  
 Available in 9FT (approx. 274cm) and 11 FT (approx. 335cm) lengths.



## WEIGHTED JUMP ROPE

Red 11" 833620-70-4



RETAIL



GYM & SPECIALTY SHOPS

The Everlast Weighted Jump Rope is a great way to burn calories and work on that cardio so you can go the distance. Integrated precision ball bearing rotation joint allows for both speed and agility footwork training without losing rotation. Strategically placed grip panels keep the rope from slipping while trimmable 9 ft rope allows for a customizable length for athletes of all sizes. Jump into fitness with the Everlast Weighted Jump Rope.

- 26mm Diameter
- Integrated 142g permeant weight
- TPU grip panels
- Trimmable from 9ft
- Ball bearing rotation joint



## WEIGHTED & ADJUSTABLE JUMP ROPE

Grey/Yellow 833640-70-8



RETAIL



GYM & SPECIALTY SHOPS

Classic conditioning exercise used to tonemuscles and burn calories.  
 Adjustable and durable cable rope featuring a steel ball joint for smooth, consistent rotation.  
 Approx. 0.4 lb (approx. 0.2 kg) removable weights in each handle for varying levels of difficulty.  
 11' length (approx. 335cm)



## SPEED ROPE + SOCKET J 11

Black 11" 833630-70-8

Tone muscles and burn calories.

Adjustable and durable cable rope featuring a steel ball joint for smooth consistent rotation.  
Approx. 0.1 lb (approx. 0.05kg) removable weights in each handle for varying levels of difficulty.  
11' length (approx. 335cm).



RETAIL



GYM & SPECIALTY SHOPS



## PRO WEIGHTED JUMP ROPE 11

Black 11" 883380-70-12

Tone muscles and burn calories.

Adjustable and durable cable rope featuring a steel ball joint for smooth, consistent rotation.  
Approx. 0.4 lb (approx. 0.2kg) removable weights in each handle for varying levels of difficulty.  
11' length (approx. 335cm)



RETAIL



GYM & SPECIALTY SHOPS



## BLACK ALU SPEED ROPE

Black 883390-70-8

An essential component to any boxing workout, the Everlast Aluminum Speed Rope allows boxers to increase coordination and stamina while burning serious calories. Jumping rope is a classic conditioning exercise used to tone muscles and burn calories. The metal bearing system allows for a fast and smooth rotation. Textured aluminum handles make for a comfortable, non-slip grip that won't hold you back from a successful workout.



RETAIL



GYM & SPECIALTY SHOPS



## JUMP ROPE 11

Black 11" 833600-70-8

Adjustable and durable cable rope featuring easy grip handles with smooth, consistent rotation.  
Ideal for toning muscles and burning calories.  
11 FT (approx. 335cm)



RETAIL



GYM & SPECIALTY SHOPS



## PVC SAUNA SUIT

Black S/M 920170-70-8  
Black M/L 920171-70-8  
Black L/XL 920172-70-8  
Black XL/XXL 920173-70-8

Designed to trap body heat and keep muscles loose, so you can shed excess water weight and calories more efficiently prior to or during a workout.

Made of top-quality material that wipes clean with a damp cloth.

Two-piece suit with elastic waist and cuff pant.

Black color: Made with EVA material.

Grey and white colors: Made with PVC material.



RETAIL



GYM & SPECIALTY SHOPS



## CORE FITNESS KIT

Black/White 896760-70-8



RETAIL



GYM & SPECIALTY SHOPS

The Everlast Core Boxing Fitness Kit is the perfect 1-2 combo to get you started on your boxing journey. Kit includes one pair of Everlast Core Slip-On Boxing Gloves and one pair of Everlast Core Punch Mitts.

Core Slip-On Boxing Gloves - Anti-microbial treated lining - Full mesh palms - Open thumb design  
Elastic wrist strap - Grip bar installed - Not intended for sparring or power punches - Core Punch Mitts  
Made from synthetic leather - Anti-microbial treated lining - Singler layer flat foam  
Canvas impact surface - Ventilated knuckles



## 1910 MEDICINE BALL

Brown 925570-70-9

Handcrafted full grain leather construction.  
Features laser etched graphics and logos.



GYM & SPECIALTY SHOPS

A professional boxer is captured in a low, ready stance inside a boxing ring. The boxer is wearing dark-colored trunks and black boxing gloves. The ring's white ropes are visible, and the floor has a large blue logo. In the background, there are banners for 'showroom optical' and 'FINDR', and a person is visible behind the ropes. The lighting is dramatic, highlighting the boxer's physique.

# COMPETITION TRUNKS





## COMPETITION BOXING SHORT



RETAIL



GYM & SPECIALTY SHOPS

Black/Gold 881090-60-8 Red/White 881090-60-4 Blue/White 881090-60-5

Boxing Short Competition in Satin.  
With woven label bi-color.  
Side bias contrasted all around the product.  
Big side slits and high belt height.

# SIZE CHART

## SELECTING AN EVERGEL HAND WRAP:

With a measuring tape, Measure the circumference around your palm, across the knuckles.

HAND SIZE	MEN'S SIZE	WOMEN'S SIZE*
	Up to 18 cm	X
18 cm - 19 cm	M	M-L
19 cm - 20 cm	M-L	L
20 cm - 23 cm	L	X
23 cm - 25 cm	XL	X



\*SIZING FOR THE EVERGEL HAND WRAPS IN PINK ONLY

## SELECTING A HEADGEAR SIZE

SIZE	HEAD CIRCUMFERENCE
S	UP TO 54,5 cm
M	54,5-56,5 cm
L	56,5-58,5 cm
XL	58,5 cm & +



## SELECTING AN GLOVE SIZE

Use the following chart to estimate a glove weight that will properly fit your hand size in most cases.

82 kg	16 oz.
72 kg	14 oz.
63 kg	8-12 oz.

152 cm 172 cm 182 cm



## SELECTING A GROIN PROTECTOR SIZE

SIZE	WAIST SIZE
S	UP TO 76 cm
M	81-86 cm
L	91-96 cm
XL	96 cm & +



## CHOSING A HEAVY BAG:

### RECOMMENDED WEIGHT:

Bag should be approximately half your weight.

82 kg	45 kg - 100LB.
72 kg	36 kg - 80LB.
63 kg	27 kg - 60LB.

152 cm 172 cm 182 cm





Division-B2.com.pl



WYŁĄCZNY DYSTRYBUTOR MARKI W POLSCE



DIVISION B-2  
ul. Szamotulska 15  
62-081 Baranowo

tel. +48 61 8499411  
fax. +48 61 8499407  
contact@Division-B2.com.pl

sklep firmowy: [www.ring22.pl](http://www.ring22.pl)  
[www.Division-B2.com.pl](http://www.Division-B2.com.pl)